

JCDecaux

LIGHTING IMPACT ASSESSMENT -
OUTDOOR SIGNAGE AT THE CORNER OF HUME HIGHWAY AND GROSVENOR
CRESCENT, ASHFIELD, NSW

03 April 2023
Ref: 3023.14

Lighting Impact Assessment
Outdoor Signage at the Corner of Hume Hwy and Grosvenor
Cres, Ashfield, NSW

Electrolight Australia Pty Ltd
ABN: 44 600 067 392

info@electrolight.com
www.electrolight.com

4/414 Bourke St
Surry Hills, NSW 2010
T + 612 9267 4777

| DATE | REV | COMMENT | PREPARED BY | CHECKED BY |
|----------|-------|-----------------|-------------|------------|
| 03/04/23 | REV E | For Information | HB | RS |

CONTENTS

| | |
|-------------------------------------|----|
| 1. INTRODUCTION | 3 |
| 2. DEFINITIONS | 3 |
| 2.1 Illuminance | 3 |
| 2.2 Luminance | 3 |
| 2.3 Luminous Intensity | 3 |
| 2.4 Obtrusive Light | 3 |
| 2.5 Threshold Increment | 3 |
| 2.6 AGI32 Light Simulation Software | 3 |
| 3. SITE DESCRIPTION AND SCOPE | 4 |
| 4. DESIGN GUIDELINES AND STANDARDS | 4 |
| 5. LUMINANCE ASSESSMENT | 5 |
| 6. AS4282 ASSESSMENT | 6 |
| 7. SUMMARY | 8 |
| 8. DESIGN CERTIFICATION | 9 |
| APPENDIX A | 10 |
| APPENDIX B | 13 |
| APPENDIX C | 15 |
| APPENDIX D | 17 |

1. INTRODUCTION

Electrolight have been appointed by JCDecaux to undertake a Lighting Impact Assessment on the proposed pylon digital signage to be installed at the corner of Hume Hwy and Grosvenor Cres, Ashfield, NSW. The objective of the assessment is to report on compliance with the State Environmental Planning Policy (Industry and Employment) 2021, NSW Transport Corridor Outdoor Advertising and Signage Guidelines, and AS4282-2019 Control of the Obtrusive Effects of Outdoor Lighting.

2. DEFINITIONS

2.1 Illuminance

The physical measure of illumination is illuminance. It is the luminous flux arriving at a surface divided by the area of the illuminated surface. Unit: lux (lx); 1 lx = 1 lm/m².

(a) Horizontal illuminance (E_h) The value of illuminance on a designated horizontal plane

(b) Vertical illuminance (E_v) The value of illuminance on a designated vertical plane

Where the vertical illuminance is considered in the situation of potentially obtrusive light at a property boundary it is referred to as environmental vertical illuminance (E_{ve}).

2.2 Luminance

The physical quantity corresponding to the brightness of a surface (e.g. a lamp, luminaire or reflecting material such as the road surface) when viewed from a specified direction. SI Unit: candela per square metre (cd/m²) – also referred to as “nits”.

2.3 Luminous Intensity

The concentration of luminous flux emitted in a specified direction. Unit: candela (cd).

2.4 Obtrusive Light

Spill Light which, because of quantitative, directional or spectral attributes in a given context, gives rise to annoyance, discomfort, distraction or a reduction in the ability to see essential information.

2.5 Threshold Increment

The measure of disability glare expressed as the percentage increase in contrast required between a standard object and its background (the carriageway) for it to be seen equally as well with the source of glare present as with it absent, derived in the specified manner. This metric is directly related to Veiling Luminance.

NOTE: The required value is a maximum for compliance of the lighting scheme.

2.6 AGI32 Light Simulation Software

AGI32 (by U.S. company Lighting Analysts) is an industry standard lighting simulation software package that can accurately model and predict the amount of light reaching a designated surface or workplane. AGI32 has been independently tested against the International Commission On Illumination (CIE) benchmark, CIE 171:2006, Test Cases to Assess the Accuracy of Lighting Computer Programs.

2.7 Upward Light Ratio (ULR)

The ratio between the luminous flux emitted above the horizontal plane to the total flux emitted by a light source. The ULR is used as a measure to limit direct spill light to the sky.

3. SITE DESCRIPTION AND SCOPE

The digital signage is proposed to be installed on a pylon adjacent the eastern elevation of the rail bridge at the corner of Hume Hwy and Grosvenor Cres, Ashfield, NSW. The proposed pylon signage is oriented towards the northbound traffic on Hume Hwy (Liverpool Rd). The total active display (illuminated) area of the proposed digital signage is 14.16 m². The digital signage is to be in 24 hour operation. Refer to Appendix A for proposed signage location plan and elevations.

The proposed digital signage is illuminated using LEDs installed within the front face. The brightness of the LEDs shall be controlled to provide upper and lower thresholds as required as well as automatically via a local light sensor to adjust to ambient lighting conditions.

For the purpose of this report the proposed manufacturer of the digital signage is noted as Big Screen Video model type YH-DT6-HB1-J with performance parameters as outlined in Appendix B. The signage includes baffles which mitigate upward waste light, resulting in an Upward Light Ratio (ULR) of less than 50%. Alternative digital sign manufacturers may be used for this installation as long as they have equivalent lighting and performance characteristics and are commissioned as described in this report.

4. DESIGN GUIDELINES AND STANDARDS

The Lighting Impact Assessment will review the proposed digital signage against the following Criteria, Design Guidelines and Standards.

- State Environmental Planning Policy (Industry and Employment) 2021 (Refer Appendix C)
- Transport Corridor Outdoor Advertising & Signage Guidelines 2017
- AS 4282-2019 Control of the Obtrusive Effects of Outdoor Lighting

5. LUMINANCE ASSESSMENT

The maximum permissible night time luminance of the signage is determined by the existing lighting environment of its surroundings. AS4282 outlines maximum average luminances for different Environmental Zones as shown in Table 1 below:

| TABLE 1 - MAXIMUM NIGHT TIME AVERAGE LUMINANCE FOR SIGNAGE | | |
|--|--|-------------------------------|
| Environmental Zone | Description | Max Average Luminance (cd/m2) |
| A4 | High district brightness e.g. Town and city centres, commercial areas, and residential areas abutting commercial areas | 350 |
| A3 | Medium district brightness e.g. suburban areas in towns and cities | 250 |
| A2 | Low district brightness e.g. sparsely inhabited rural and semi-rural areas | 150 |
| A1 | Dark e.g. relatively uninhabited rural areas. No Road Lighting | 0.1 |
| A0 | Intrinsically Dark e.g. Major Optical Observatories. No Road Lighting | 0.1 |

Note: Where the signage is viewed against a predominantly dark background (e.g. night sky) then the maximum applicable environmental zone is A2

Based on an assessment of the surrounding environment, the proposed signage is located within Environmental Zone A3 under AS4282, therefore the maximum night time luminance is 250 cd/m2.

AS4282 does not include limits for daytime operation of illuminated signage. However, the Transport Corridor Outdoor Advertising & Signage Guidelines outlines maximum permissible luminance limits for various lighting conditions, including daytime. Under the Guidelines, the proposed signage is classified as being within Zone 4, which is described as an area with generally low levels of off-street ambient lighting, or areas that have residential properties nearby. The maximum night time luminance of a digital signage within Zone 4 is 200 cd/m2.

Table 2 outlines the maximum luminance levels to comply with AS4282 and the Transport Corridor Outdoor Advertising & Signage Guidelines for the various lighting conditions listed below:

| TABLE 2 - LUMINANCE LEVELS FOR DIGITAL ADVERTISEMENTS | | |
|---|-------------------------------------|-----------|
| Lighting Condition | Max Permissible Luminance (cd/m2) # | Compliant |
| Full Sun on face of Signage | No Limit | ✓ |
| Day Time Luminance (typical sunny day) | 6000 | ✓ |
| Morning and Evening Twilight and Overcast Weather | 500 | ✓ |
| Night Time | 200 | ✓ |

The signage is to be dimmed on site to ensure the maximum luminance nominated above is not exceeded.

It is our opinion that a signage that is illuminated to the maximum luminances outlined above would be visually consistent with the existing ambient lighting and suitable for the local area. A more detailed night time lighting assessment is provided in Section 6.0.

6. AS4282 ASSESSMENT

The proposed pylon signage has been assessed against AS 4282-2019 Control of the Obtrusive Effects of Outdoor Lighting as outlined in Section 4.

AS4282 provides limits for different obtrusive factors associated with dark hours (night time) operation of outdoor lighting systems. Two sets of limiting values for spill light are given based on whether the lighting is operating before a curfew (known as “pre-curfew” operation) or operating after a curfew (known as post-curfew or curfewed operation). Pre-curfew spill lighting limits are higher than post-curfew values, on the understanding that spill light is more obtrusive late at night when residents are trying to sleep. Under AS4282, the post-curfew period is taken to be between 11pm and 6am daily. As the signage operates all night, the signage will be assessed against the more stringent post-curfew limits.

Illuminance Assessment

The AS4282 assessment includes a review of nearby residential dwellings and calculation of the amount of illuminance (measured in Lux) that the properties are likely to receive from the signage during night time operation.

The acceptable level of illuminance will in part be determined by the night time lighting environment around the dwellings. AS4282 categorises the night time environment into different zones with maximum lighting limits as shown in Table 3 below:

| TABLE 3 - MAXIMUM VALUES OF LIGHT TECHNICAL PARAMETERS | | | |
|--|-------------------------------|-------------|--|
| Environmental Zone | Max Vertical Illuminance (lx) | | Description |
| | Pre-curfew | Post-curfew | |
| A0 | 0 | 0 | Intrinsically Dark e.g. Major Optical Observatories. No Road Lighting |
| A1 | 2 | 0.1 | Dark e.g. relatively uninhabited rural areas. No Road Lighting |
| A2 | 5 | 1 | Low district brightness e.g. sparsely inhabited rural and semi-rural areas |
| A3 | 10 | 2 | Medium district brightness e.g. suburban areas in towns and cities |
| A4 | 25 | 5 | High district brightness e.g. Town and city centres, commercial areas, and residential areas abutting commercial areas |

Based on an assessment of the surrounding areas, the nearest dwellings with potential views to the signage are at the following locations:

| Address | Zone | Address | |
|-----------------------|------|-----------------------|----|
| 11 Bruce St | A3 | 124 Carlton Cres | A3 |
| 13 Federal Ave | A3 | 125 Carlton Cres | A3 |
| 26 Federal Ave | A3 | 126 Carlton Cres | A3 |
| 85-87 Liverpool Rd | A3 | 127 Carlton Cres | A3 |
| 88 Liverpool Rd | A3 | 63-63A Grosvenor Cres | A3 |
| 90 Liverpool Rd | A3 | 64 Grosvenor Cres | A3 |
| 92 Liverpool Rd | A3 | 84 Grosvenor Cres | A3 |
| 118 Carlton Cres | A3 | 86 Grosvenor Cres | A3 |
| 120 Carlton Cres | A3 | | |
| 122-123A Carlton Cres | A3 | | |

As such, the dwellings above will form the focus of the illuminance assessment.

The proposed signage (and surrounding environment) was modelled in lighting calculation program AGI32 to determine the effect (if any) of the light spill from the proposed signage. Photometric data for the screen was provided by the screen manufacturer* with luminances corresponding to the night time limits outlined in Section 5. Appendix D shows the lighting model and the results of the calculations.

It should be noted that some of the houses are shielded by mature vegetation which effectively obstructs the spill light of the signage. However calculations were undertaken assuming there was no vegetation present as outlined in AS4282.

During night time operation, it can be seen from the lighting model that the maximum illuminance is 0.30 lux to dwellings within Zone A3. The illuminance level complies with the maximum AS4282 limit of 2 lux as outlined in Table 3.

Threshold Increment Assessment

The Threshold Increment was also calculated for the traffic approaches on Liverpool Rd (northbound), Liverpool Rd Right Turn (northbound), Elizabeth St (eastbound) and Elizabeth St Right Turn (eastbound). The calculation grids were located at 1.5m above ground level for general traffic approaches, with an approach viewing distance of between 5m to 200 m from the sign. The calculation results show that the Threshold Increment does not exceed 4.76% for any traffic approach (the allowable maximum under the standard is 20%).

Luminous Intensity

The luminous intensity limits nominated in the standard are not applicable for internally illuminated signage.

Additional Requirements:

The signage operator must ensure that the average luminance difference between successive images does not exceed 30% to ensure compliance with AS4282. The dwell time shall be 10 seconds or greater.

It can therefore be seen that the proposed digital signage complies with all relevant requirements of AS 4282-2019 Control of the Obtrusive Effects of Outdoor Lighting.

* Electrolight takes no responsibility for the accuracy of third party provided photometric data.

7. SUMMARY

- The proposed pylon digital signage to be installed at the corner of Hume Hwy and Grosvenor Cres, Ashfield, NSW, shall be commissioned on site to yield the following maximum luminances:

| LUMINANCE LEVELS FOR DIGITAL ADVERTISEMENTS | | |
|--|-----------------------------------|-----------|
| Lighting Condition | Max Permissible Luminance (cd/m2) | Compliant |
| Full Sun on face of Signage | No Limit | ✓ |
| Day Time Luminance (typical sunny day) | 6000 | ✓ |
| Morning and Evening Twilight and Overcast Weather | 500 | ✓ |
| Night Time | 200 | ✓ |

- The signage operator must ensure that the average luminance difference between successive images does not exceed 30% to ensure compliance with AS4282. The dwell time shall be 10 seconds or greater.
- The proposed pylon signage has been found to comply with all relevant requirements of AS 4282-2019 Control of the Obtrusive Effects of Outdoor Lighting.
- In complying with the above requirements, the proposed pylon signage should not result in unacceptable glare nor should it adversely impact the safety of pedestrians, residents or vehicular traffic. Additionally, the proposed signage should not cause any reduction in visual amenity to nearby residences or accommodation.

8. DESIGN CERTIFICATION

The proposed pylon digital signage to be installed at the corner of Hume Hwy and Grosvenor Cres, Ashfield, NSW, if commissioned according to this report, complies with the following criteria, guidelines and standards:

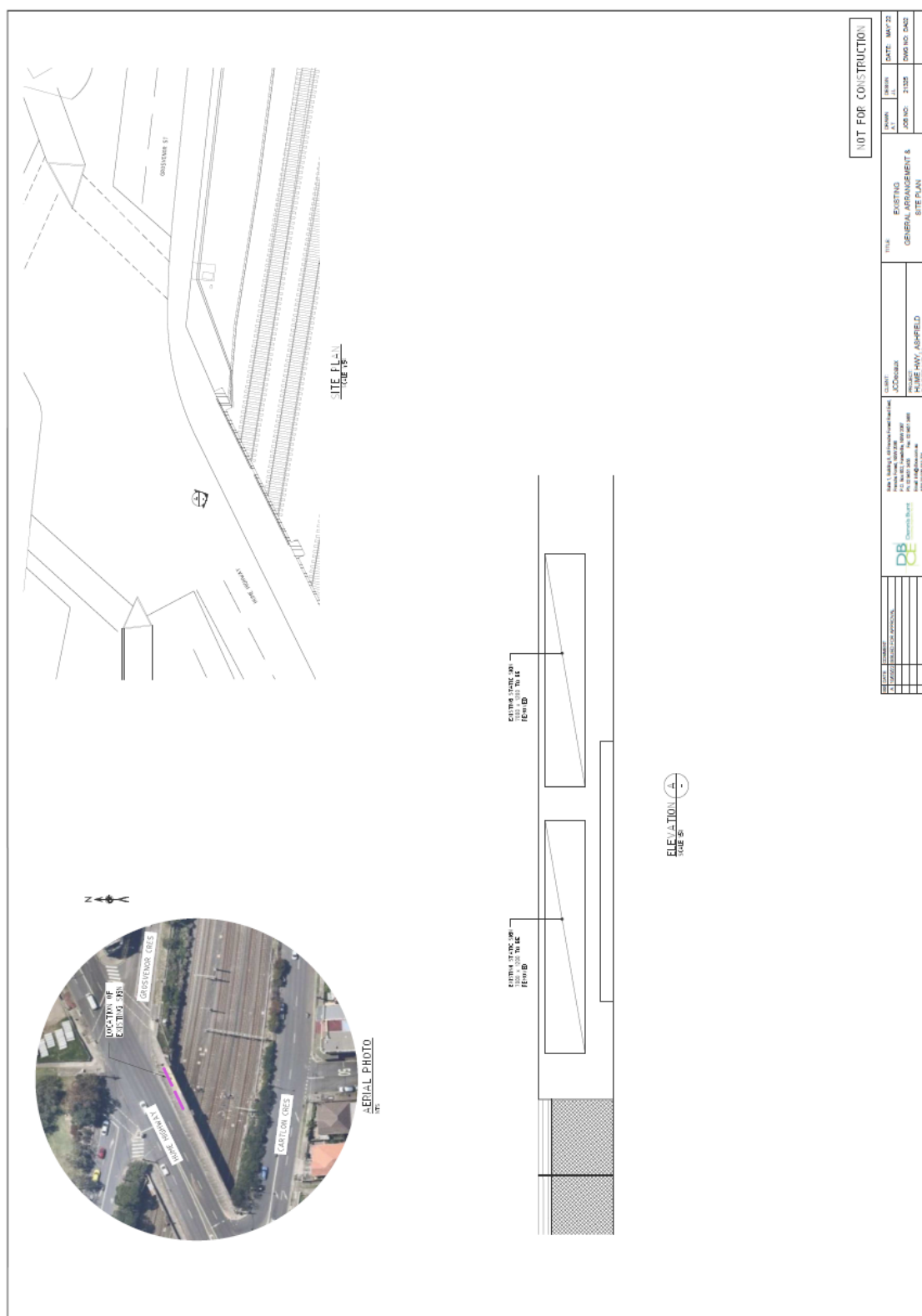
- State Environmental Planning Policy (Industry and Employment) 2021 (Refer Appendix C)
- Transport Corridor Outdoor Advertising & Signage Guidelines 2017
- AS 4282-2019 Control of the Obtrusive Effects of Outdoor Lighting

A handwritten signature in black ink, appearing to read 'Ryan Shamier', with a long horizontal flourish extending to the right.

Ryan Shamier
Senior Lighting Designer
Electrolight Sydney
03/04/23

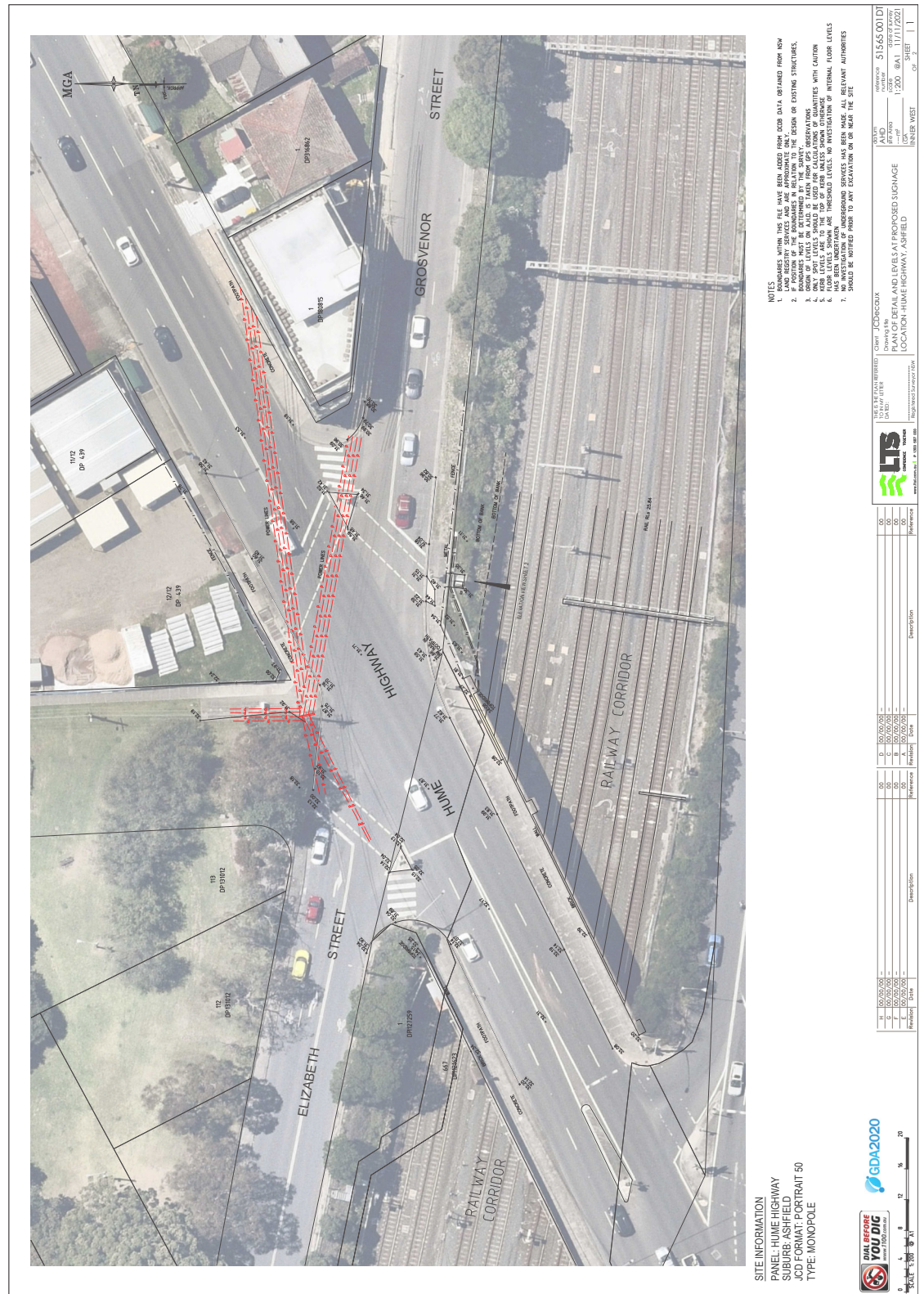
APPENDIX A

SIGNAGE LOCATION



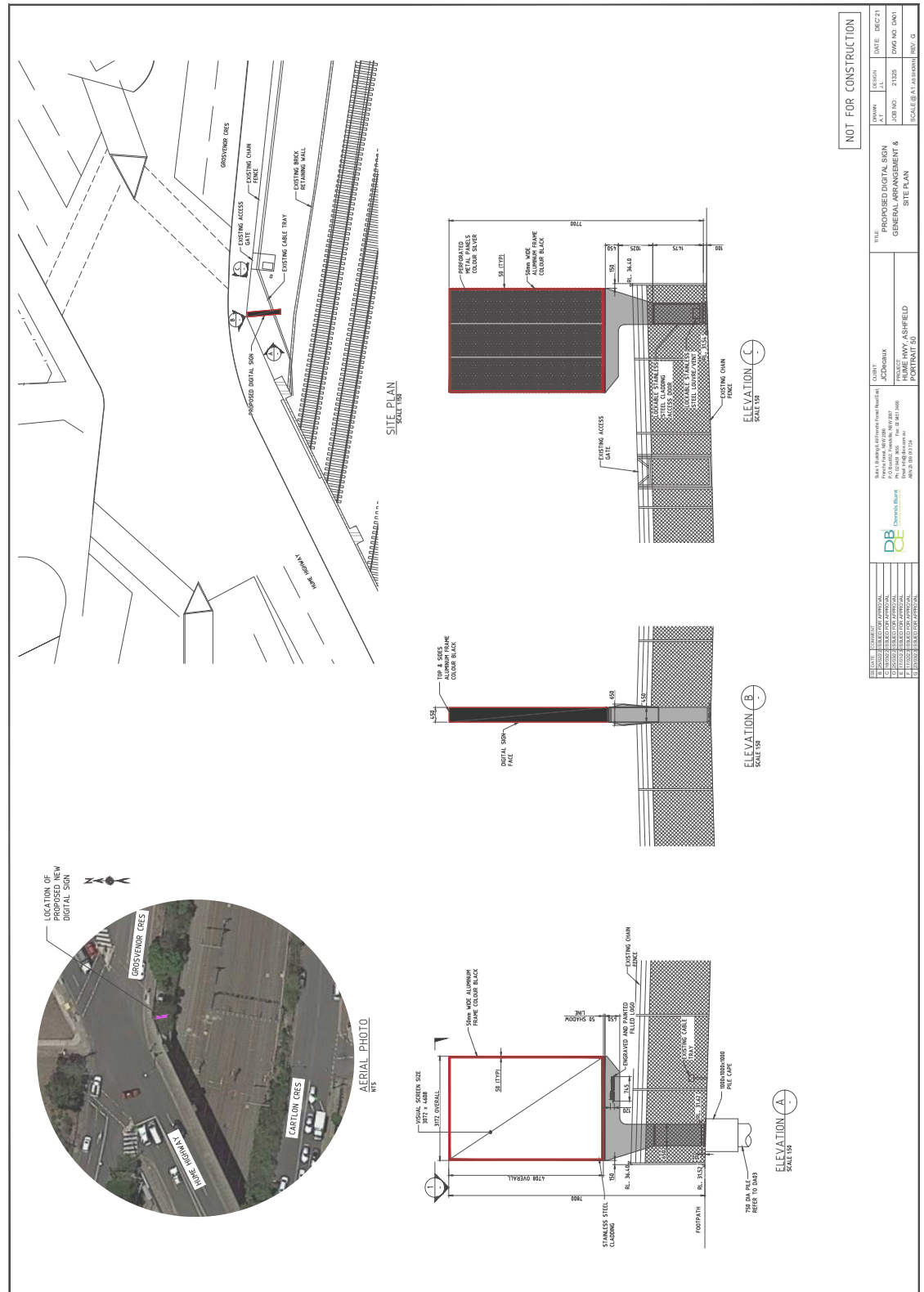
APPENDIX A

SIGNAGE LOCATION

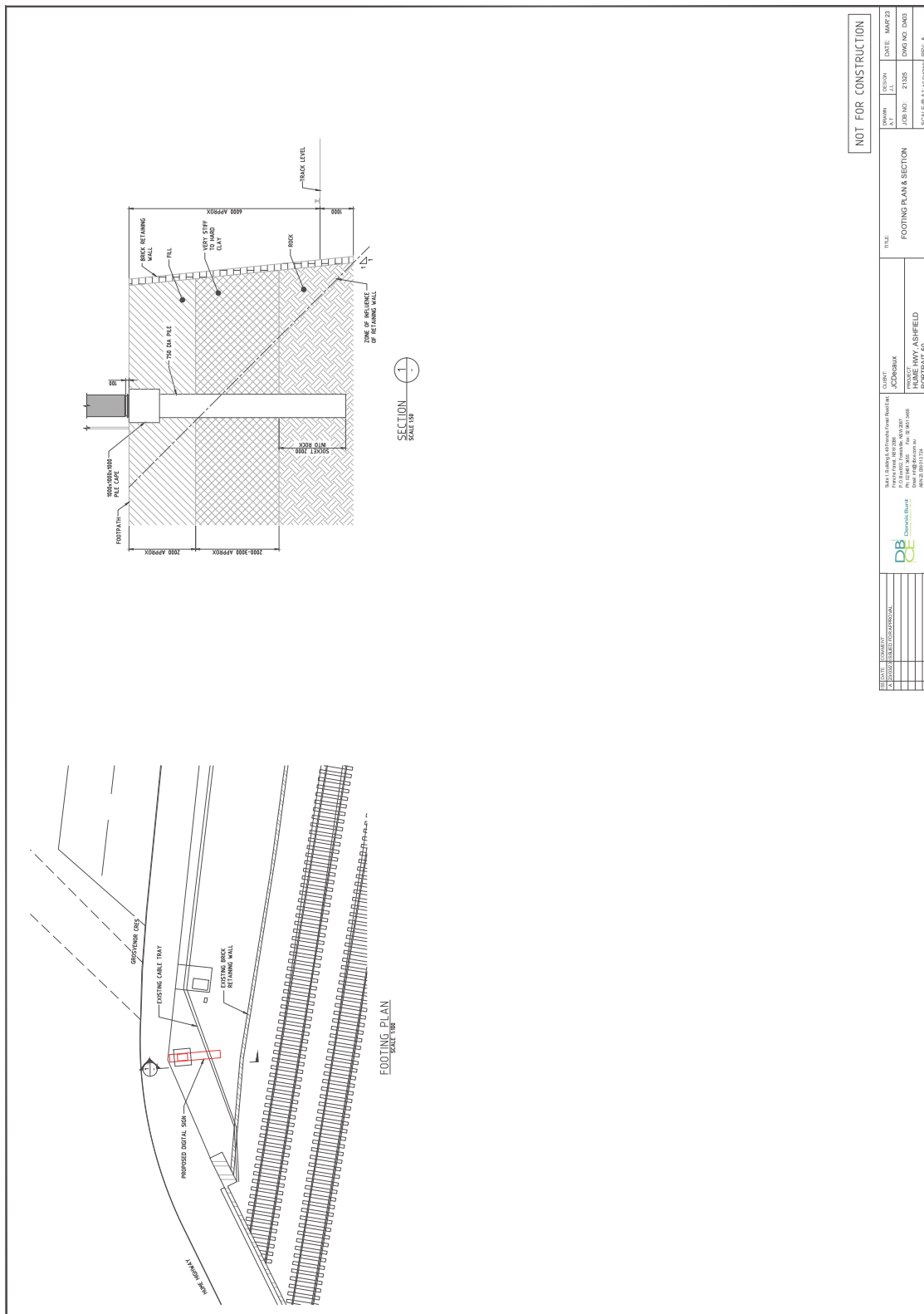


APPENDIX A

SIGNAGE LOCATION



SIGNAGE LOCATION



Big Screen Video

Display Specification

| Product Specifications | |
|--------------------------------|----------------------------------|
| Active Screen Size (WxH) | 3.072mW x 4.608mH |
| Active Screen Size (Sqm) | 14.16sqm |
| Matrix Size (WxH) | 512 x 768 |
| Aspect Ratio | 0.7:1 |
| Display Weight | 821kg |
| Display Weight per Sqm | 58kg |
| Total Avg. Power Consumed | 2.97k |
| Total Max. Power Consumed | 8.49kW |
| Max. Power Consumption per Sqm | 0.6kW/m ² |
| Current Draw | 36 amps max load* |
| Mains Recommendation | Three phase at 20 amps per phase |

*Doesn't allow for in-rush current

Bringing spaces to life.

Australia—New Zealand

p.4

Big Screen Video

Specifications: Outdoor 6mm SMD

| Product Specifications | |
|-------------------------|-----------------------------|
| Catalogue no. | YH-DT6-HB1-J |
| Physical Pitch | 6mm, physical |
| Pixel Density | 27,777 pixel/m ² |
| Pixel Configuration | SMD LED |
| Module Dimensions (WxH) | 192mm x 192mm |
| Module Resolution (WxH) | 32 x 32 pixels |
| Cabinet Material | Steel |
| Viewing Angle | H 140 Deg. / V 120 Deg. |
| Best Viewing Distance | 6+m |
| Maintenance | Front access |
| Protection Degree | IP65 front; IP54 rear |

| Product Specifications | |
|-------------------------------|---|
| Panel Net Weight | approx. 58kg/sqm |
| Gray Scale | 16-bit Color Processing Depth |
| Refresh Rate | 3840+ Hz |
| Display Control | Synchronous control |
| Power Supply | 220V, 50Hz |
| Operation Temp. | -20° ~60° |
| Display Dimming | Auto/Manual, 8~256 Levels |
| Signal Transfer | Text, image, graphics animations, video |
| Power Consumption (Max./Avg.) | 0.6kw/sqm; 0.2kw/sqm |
| Lifetime | 100,000hrs |
| Luminance | 6000 nits |

Bringing spaces to life.

Australia—New Zealand

p.5

APPENDIX C

State Environmental Planning Policy (Industry and Employment) 2021

Schedule 5 Assessment criteria

(Clauses 8, 13 and 17)

1. Character of the area

- Is the proposal compatible with the existing or desired future character of the area or locality in which it is proposed to be located?
- Is the proposal consistent with a particular theme for outdoor advertising in the area or locality?

2. Special areas

- Does the proposal detract from the amenity or visual quality of any environmentally sensitive areas, heritage areas, natural or other conservation areas, open space areas, waterways, rural landscapes or residential areas?

3. Views and vistas

- Does the proposal obscure or compromise important views?
- Does the proposal dominate the skyline and reduce the quality of vistas?
- Does the proposal respect the viewing rights of other advertisers?
-

4. Streetscape, setting or landscape

- Is the scale, proportion and form of the proposal appropriate for the streetscape, setting or landscape?
- Does the proposal contribute to the visual interest of the streetscape, setting or landscape?
- Does the proposal reduce clutter by rationalising and simplifying existing advertising?
- Does the proposal screen unsightliness?
- Does the proposal protrude above buildings, structures or tree canopies in the area or locality?
- Does the proposal require ongoing vegetation management?

5. Site and building

- Is the proposal compatible with the scale, proportion and other characteristics of the site or building, or both, on which the proposed signage is to be located?
- Does the proposal respect important features of the site or building, or both?
- Does the proposal show innovation and imagination in its relationship to the site or building, or both?

6. Associated devices and logos with advertisements and advertising structures

- Have any safety devices, platforms, lighting devices or logos been designed as an integral part of the signage or structure on which it is to be displayed?

7. Illumination

- Would illumination result in unacceptable glare?
- Would illumination affect safety for pedestrians, vehicles or aircraft?
- Would illumination detract from the amenity of any residence or other form of accommodation?
- Can the intensity of the illumination be adjusted, if necessary?
- Is the illumination subject to a curfew?

8. Safety

- Would the proposal reduce the safety for any public road?
- Would the proposal reduce the safety for pedestrians or bicyclists?
- Would the proposal reduce the safety for pedestrians, particularly children, by obscuring sightlines from public areas?

APPENDIX D

OBTRUSIVE LIGHTING AND THRESHOLD INCREMENT CALCULATIONS

| Calculation Summary | | | |
|----------------------------------|----------------|-------|------|
| Label | CalcType | Units | Max |
| Elizabeth St Right Turn (eastbou | Obtrusive - TI | % | 4.76 |
| Liverpool Rd (northbound) | Obtrusive - TI | % | 0.70 |
| Liverpool Rd right turn (nthbnd) | Obtrusive - TI | % | 0.00 |
| Elizabeth St (eastbound) | Obtrusive - TI | % | 2.86 |



APPENDIX D

THRESHOLD INCREMENT & OBTRUSIVE LIGHTING CALCULATIONS

| Calculation Summary | | | |
|--------------------------------|-----------------|-------|------|
| Label | CalcType | Units | Max |
| 118 Carlton Cres Ill Seg1 | Obtrusive - Ill | Lux | 0.00 |
| 120-119 Carlton Cres Ill Seg1 | Obtrusive - Ill | Lux | 0.00 |
| 122-123A Carlton Cres Ill Seg1 | Obtrusive - Ill | Lux | 0.00 |
| 122-123A Carlton Cres Ill Seg2 | Obtrusive - Ill | Lux | 0.12 |
| 13 Federal Ave Ill Seg1 | Obtrusive - Ill | Lux | 0.00 |
| 13 Federal Ave Ill Seg2 | Obtrusive - Ill | Lux | 0.00 |
| 63-63A Grosvenor Cres Ill Seg1 | Obtrusive - Ill | Lux | 0.00 |
| 63-63A Grosvenor Cres Ill Seg2 | Obtrusive - Ill | Lux | 0.00 |
| 63-63A Grosvenor Cres Ill Seg3 | Obtrusive - Ill | Lux | 0.00 |
| 64 Grosvenor Cres Ill Seg1 | Obtrusive - Ill | Lux | 0.00 |
| 64 Grosvenor Cres Ill Seg2 | Obtrusive - Ill | Lux | 0.00 |
| 84 Grosvenor Cres Ill Seg1 | Obtrusive - Ill | Lux | 0.00 |
| 84 Grosvenor Cres Ill Seg2 | Obtrusive - Ill | Lux | 0.00 |
| 84 Grosvenor Cres Ill Seg3 | Obtrusive - Ill | Lux | 0.00 |
| 84 Grosvenor Cres Ill Seg4 | Obtrusive - Ill | Lux | 0.00 |
| 85-87 Liverpool Rd Ill Seg1 | Obtrusive - Ill | Lux | 0.00 |
| 85-87 Liverpool Rd Ill Seg2 | Obtrusive - Ill | Lux | 0.00 |
| 86 Grosvenor Cres Ill Seg1 | Obtrusive - Ill | Lux | 0.00 |
| 86 Grosvenor Cres Ill Seg2 | Obtrusive - Ill | Lux | 0.00 |
| 88 Liverpool Rd Ill Seg1 | Obtrusive - Ill | Lux | 0.00 |
| 88 Liverpool Rd Ill Seg2 | Obtrusive - Ill | Lux | 0.00 |
| 124 Carlton Cres Ill Seg1 | Obtrusive - Ill | Lux | 0.00 |
| 124 Carlton Cres Ill Seg2 | Obtrusive - Ill | Lux | 0.30 |
| 125 Carlton Cres Ill Seg1 | Obtrusive - Ill | Lux | 0.00 |
| 126 Carlton Cres Ill Seg1 | Obtrusive - Ill | Lux | 0.00 |
| 127 Carlton Cres Ill Seg1 | Obtrusive - Ill | Lux | 0.00 |
| 90 Liverpool Rd Ill Seg1 | Obtrusive - Ill | Lux | 0.00 |
| 92 Liverpool Rd Ill Seg1 | Obtrusive - Ill | Lux | 0.00 |
| 11 Bruce St Ill Seg1 | Obtrusive - Ill | Lux | 0.00 |
| 11 Bruce St Ill Seg2 | Obtrusive - Ill | Lux | 0.00 |
| 26 Federal Ave Ill Seg1 | Obtrusive - Ill | Lux | 0.00 |
| 26 Federal Ave Ill Seg2 | Obtrusive - Ill | Lux | 0.00 |



Environmental Zone Legend:

- A0
- A1
- A2
- A3
- A4

APPENDIX D

OBTRUSIVE LIGHTING AND THRESHOLD INCREMENT CALCULATIONS

Obtrusive Light - Compliance Report

AS/NZS 4282:2019, A4 - High District Brightness, Curfew
Filename: 230403_3023_Rev C
3/04/2023 12:19:16 PM

Threshold Increment (TI)

Maximum Allowable Value: 20 %

Calculations Tested (2):

| Calculation Label | Adaptation Luminance | Test Results | |
|----------------------------------|----------------------|--------------|------|
| Liverpool Rd (northbound) | | 5 | PASS |
| Liverpool Rd right turn (nthbnd) | 5 | PASS | |

Obtrusive Light - Compliance Report

AS/NZS 4282:2019, A3 - Medium District Brightness, Curfew
Filename: 230403_3023_Rev C
3/04/2023 12:41:18 PM

Illuminance

Maximum Allowable Value: 2 Lux

Calculations Tested (32):

| Calculation Label | Test Results | Max. Illum. | |
|--------------------------------|--------------|-------------|------|
| 11 Bruce St_III_Seg1 | PASS | 0.00 | 0.00 |
| 11 Bruce St_III_Seg2 | PASS | 0.00 | |
| 124 Carlton Cres_III_Seg1 | PASS | 0.00 | |
| 124 Carlton Cres_III_Seg2 | PASS | 0.30 | |
| 125 Carlton Cres_III_Seg1 | PASS | 0.00 | |
| 126 Carlton Cres_III_Seg1 | PASS | 0.00 | |
| 127 Carlton Cres_III_Seg1 | PASS | 0.00 | |
| 90 Liverpool Rd_III_Seg1 | PASS | 0.00 | |
| 92 Liverpool Rd_III_Seg1 | PASS | 0.00 | |
| 120-119 Carlton Cres_III_Seg1 | PASS | 0.00 | |
| 118 Carlton Cres_III_Seg1 | PASS | 0.00 | |
| 88 Liverpool Rd_III_Seg1 | PASS | 0.00 | |
| 88 Liverpool Rd_III_Seg2 | PASS | 0.00 | |
| 86 Grosvenor Cres_III_Seg1 | PASS | 0.00 | |
| 86 Grosvenor Cres_III_Seg2 | PASS | 0.00 | |
| 84 Grosvenor Cres_III_Seg1 | PASS | 0.00 | |
| 84 Grosvenor Cres_III_Seg2 | PASS | 0.00 | |
| 84 Grosvenor Cres_III_Seg3 | PASS | 0.00 | |
| 84 Grosvenor Cres_III_Seg4 | PASS | 0.00 | |
| 64 Grosvenor Cres_III_Seg1 | PASS | 0.00 | |
| 64 Grosvenor Cres_III_Seg2 | PASS | 0.00 | |
| 63-63A Grosvenor Cres_III_Seg1 | PASS | 0.00 | |
| 63-63A Grosvenor Cres_III_Seg2 | PASS | 0.00 | |
| 63-63A Grosvenor Cres_III_Seg3 | PASS | 0.00 | |
| 85-87 Liverpool Rd_III_Seg1 | PASS | 0.00 | |
| 85-87 Liverpool Rd_III_Seg2 | PASS | 0.00 | |
| 26 Federal Ave_III_Seg1 | PASS | 0.00 | |
| 26 Federal Ave_III_Seg2 | PASS | 0.00 | |
| 13 Federal Ave_III_Seg1 | PASS | 0.00 | |
| 13 Federal Ave_III_Seg2 | PASS | 0.00 | |
| 122-123A Carlton Cres_III_Seg1 | PASS | 0.00 | |
| 122-123A Carlton Cres_III_Seg2 | PASS | 0.12 | |

Threshold Increment (TI)

Maximum Allowable Value: 20 %

Calculations Tested (2):

| Calculation Label | Adaptation Luminance | Test Results |
|----------------------------------|----------------------|--------------|
| Elizabeth St (eastbound) | 1 | PASS |
| Elizabeth St Right Turn (eastbou | 1 | PASS |